

About the Gallery

The Target Gallery, contemporary exhibition space of the Torpedo Factory Art Center, promotes high standards of art by continuously exploring new ideas through the visual media in a schedule of national and international exhibitions. The gallery hosts nine exhibits annually--some juried, some curated--featuring a variety of themes and artists. In an effort to keep our perspective challenged, our exhibits are usually composed of artists from around the world.

Artists interested in receiving information about upcoming shows can visit our website to sign up to receive email updates about upcoming call for entries.

Phone: 703.746.4584

Email: leslie.mounaime@alexandriava.gov

Open daily 10am-6pm & Thursday until 9pm

Directions For Entry

Online Application

The gallery accepts online submission form only via Submittable. To apply, you must create an account first. This will allow you to monitor the status and receive notifications about your submission. You will only need to create the account once - if you have used Submittable before you can simply log in to your account to submit. This includes uploading your images and paying via Submittable. A non-refundable \$35 entry fee includes submission for 3 pieces of artwork - each work may include one image along with only one detail image per work.

Submitting Extra Images

Are you interested in submitting more than three entries? Please fill out a new online application.

For more info visit:

torpedofactory.org/targetcalls

Guidelines

A commission of 40% will be taken on all works sold as a result of this exhibition. Payment will be mailed to the artist within 30 days of the exhibition closing. Works are insured while in Target Gallery. Artists are required to sign an Artist Agreement and Loan Agreement if accepted. The Target Gallery will keep the images of accepted works and reserves the right to reproduce the images for all media and publicity purposes. Artwork must have been made within the last five years.

Delivery

Artists are responsible for shipping their work to the gallery in sturdy, reusable boxes. Return shipping must be prepaid and enclosed with artwork. If a Call Tag is to be issued, the artist is required to make those arrangements with their shipper. The City of Alexandria will not be responsible for any damage incurred in transit or post-exhibition.

Limitations

Work should be less than 15 feet overall (height + width + length), with no one dimension measuring more than 7 feet. Final measurements must be inclusive of frame, if applicable. Weight may not exceed 150 pounds. All entries must have been conceived and created by the artist submitting the work and must have been created within the last 5 years. All work selected must be ready for exhibit: 2D work must be framed with secure hanging devices; 3D work must be suitably prepared with instructions for installation. The gallery reserves the right to reject work that differs from submitted images. Please refer to the application for specific instructions for each exhibition.

Application

The application materials must be received in the Target Gallery on Submittable no later than 11:59pm E.S.T. on Sunday, April 29, 2018.

Illuminate prospectus

Dates: Jul 21 – Sep 2, 2018

DEADLINE: April 29, 2018

Call for Entries:

Target Gallery invites artists to submit work to *Illuminate*, a special glow-in-the-dark exhibition that is focused on relationship of art and light. The lights will be turned off in the gallery, turning the viewer's attention to the illuminated artwork whether it be through video, light installation, or use of black light mediums.

JUROR: Emily Smith

Exhibition Calendar

Sunday, April 29, 2018

Entry deadline

Friday, May 18

Artists notified

Friday, July 13 - Tuesday, July 17, 2018

Accepted work due in the gallery

July 21 - September 2, 2018

Exhibition dates

Friday, July 20, 2018

Reception, 7-9 pm



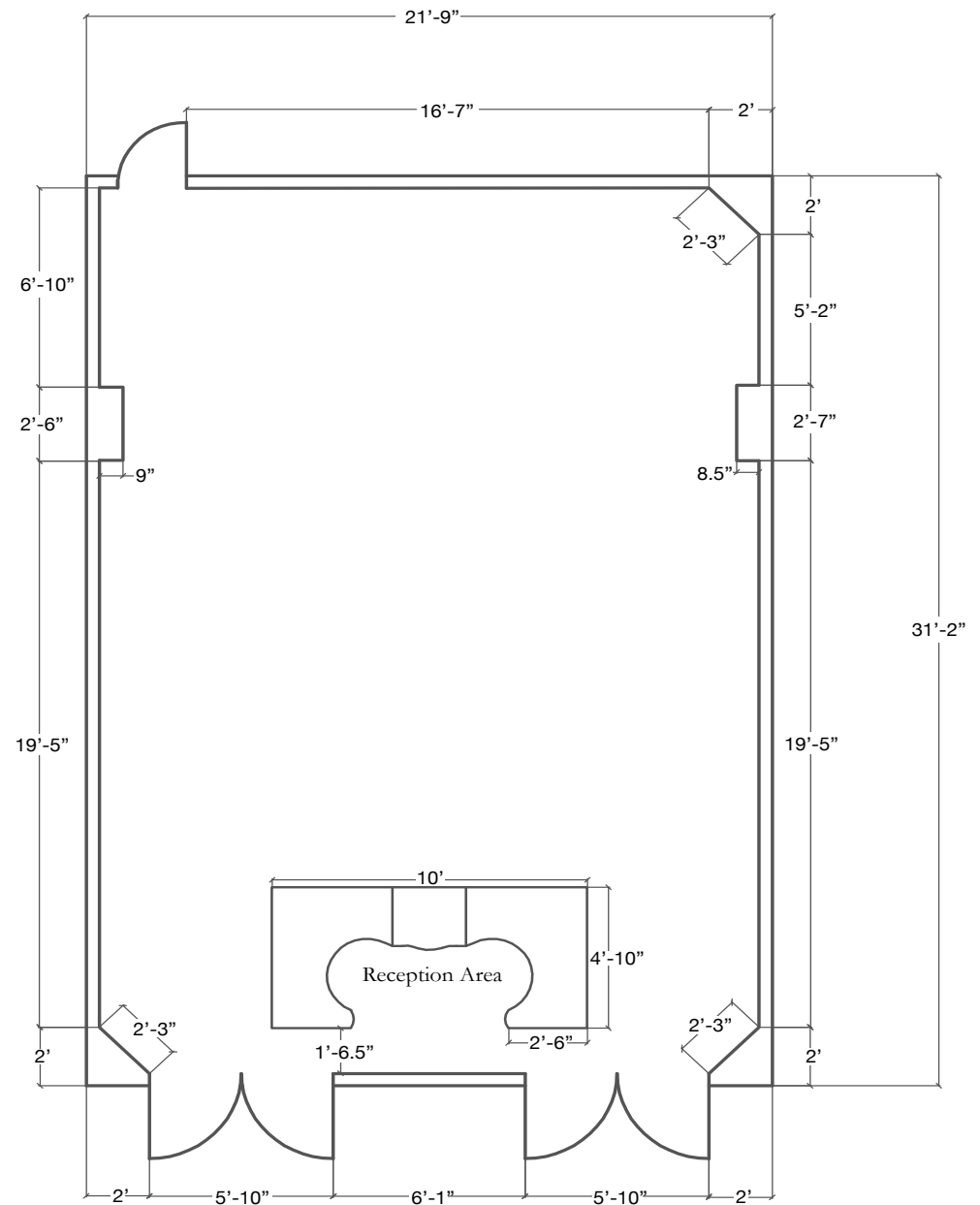
105 N. Union Street, Alexandria, VA 22314
703.746.4590 • leslie.mounaime@alexandriava.gov

www.torpedofactory.org/target

Juror Bio: Emily Smith

Emily Smith is the Executive Director of I 708 Gallery, a nonprofit arts organization based in Richmond, Virginia. Prior to coming to I 708 Gallery, Emily was the Curatorial Fellow in Modern and Contemporary Art at the Virginia Museum of Fine Arts where she worked from 2007 until 2010. Projects at VMFA include the exhibitions: *The Ludwig and Rosy Fischer Collection of German Expressionist Art*; *Matisse, Picasso, and Modern Art in Paris*; and *Labor and Leisure: Works by African American Artists* in the VMFA Permanent Collections. Prior to VMFA, she was Director of Exhibitions at Piedmont Arts in Martinsville, Virginia (2004-2007) and the Assistant Director at Second Street Gallery, Charlottesville, Virginia (2003-2004). Smith was an adjunct faculty member in art history at Patrick Henry Community College, Martinsville, VA and was a critic for a Charlottesville, Virginia weekly paper. Smith received a MA in Art History from the University of Virginia in 2002.

Find more information about I 708 Gallery:
I708gallery.org



| Target Gallery | Torpedo Factory Art Center | |
|--|----------------------------|------------------|
| Floor Plan: 682 sq ft | Wall Space 79' | Scale 3/16"=1'0" |
| Note: Ceiling is 105" high. Floor is laminate Walls are drywall, homasote, and plywood | | |