

About the Gallery

Target Gallery, contemporary exhibition space of the Torpedo Factory Art Center, promotes high standards of art by continuously exploring new ideas through the visual media in a schedule of national and international exhibitions. The gallery hosts eight exhibits annually featuring a variety of themes and artists.

Artists interested in receiving information about upcoming shows can visit our website to sign up to receive email updates about upcoming call for entries.

Website: torpedofactory.org/target

Phone: 703.746.4590

Email: leslie.mounaime@alexandriava.gov

Open daily 10am-6pm & Thursday until 9pm

Directions For Entry

Online Application

The gallery accepts **online submission only** via Submittable. To apply, you must create an account first. This will allow you to monitor the status and receive notifications about your submission. You will only need to create the account once - if you have used Submittable before you can simply log in to your account to submit. This includes uploading your images and paying via Submittable. A non-refundable \$40 entry fee includes submission of: an exhibition proposal, artist CV, image list, and up to 25 images of artwork for consideration.

The application materials must be received by Target Gallery on Submittable no later than midnight on **Sunday, February 4, 2017.**

For more info visit:

torpedofactory.org/targetcalls

Guidelines

Qualifications

This exhibition is for national emerging to mid-career artists. We will accept submissions from artists that have not had solo exhibition at a professional gallery or art space in the DC metropolitan region (BFA or MFA exhibitions do not apply).

Exhibition

A commission of 40% will be taken on all works sold as a result of this exhibition. Payment will be mailed to the artist within 30 days of the exhibition closing. Works are insured while in Target Gallery. Artists are required to sign an Artist Agreement and Loan Agreement if accepted. Target Gallery will keep the images of accepted works and reserves the right to reproduce the images for media and publicity purposes.

Delivery

Please note that Target Gallery does not have funding for artwork shipping therefore artists are responsible for shipping their work to the gallery in sturdy, reusable boxes. Return shipping must be prepaid and enclosed with artwork. The City of Alexandria will not be responsible for any damage incurred in transit or post-exhibition.

Limitations

Work should be less than 15 feet overall (height + width + length), with no one dimension measuring more than 7 feet. Final measurements must be inclusive of frame, if applicable. Weight may not exceed 150 pounds. All entries must have been conceived and created by the artist submitting the work and must have been created within the last 5 years. All work selected must be ready for exhibit: 2D work must be framed with secure hanging devices; 3D work must be suitably prepared with instructions for installation. The gallery reserves the right to reject work that differs from submitted images. Please refer to the application for specific instructions for each exhibition.

2018 Solo Exhibition prospectus

Exhibition Dates: May 25 – July 15, 2018

DEADLINE: February 4th, 2018

Call For Entries:

Target Gallery invites artists to apply for an open call for proposals for a solo exhibition for the summer of 2018. The individual or group associated with the chosen proposal will receive an exhibition at Target Gallery from May 25 – July 15, 2018. The artist(s) will also receive a \$3,000 stipend.

Jury Panel:

**Jarvis Dubois, Carolina Mayorga,
and Victoria Reis**

Exhibition Calendar

Sunday, February 4, 2018

Entry deadline

Friday, February 23, 2018

Artists notified

Tuesday, March 22, 2018

Accepted work due in the gallery

May 25 – July 15, 2018

Exhibition dates

Friday, May 25, 2018

Reception, 7-9pm



105 N. Union Street, Alexandria, VA 22314
703.746.4590 • leslie.mounaime@alexandriava.gov

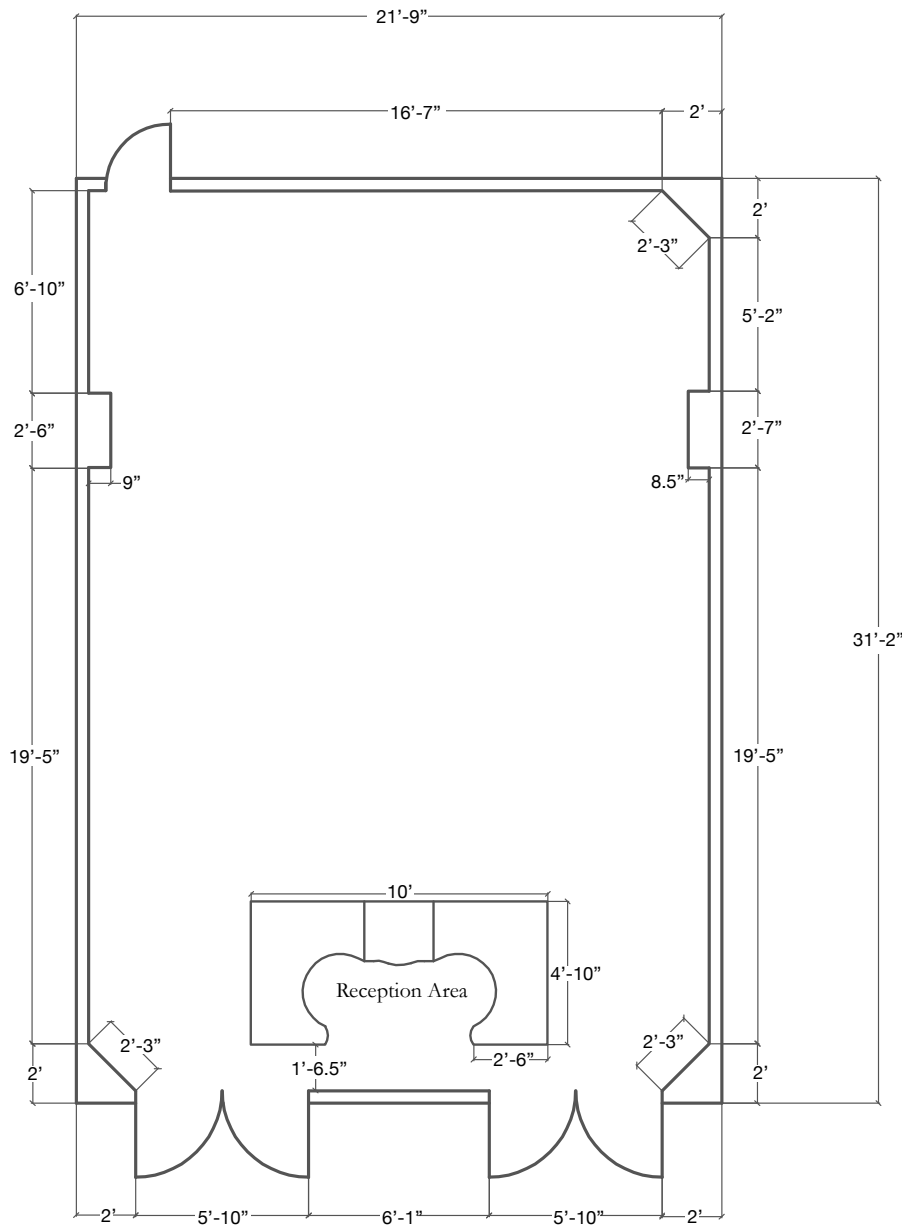
www.torpedofactory.org/target

About the 2018 Jurors

Jarvis DuBois has over 14 years combined registrarial and curatorial experience, currently at the Smithsonian Institution's National Museum of American History since 2002 as a Museum Specialist. While a student at the University of California, Los Angeles (UCLA) he completed the Getty Center Summer Grant Program working at the UCLA Armand Hammer Museum in 1995. He's also a current board member of Millennium Arts Salon as well as a member of the Hillyer Art Space Artist Advisory committee. Jarvis has written articles for the International Review of African American Art based at Hampton University, Virginia.

Carolina Mayorga is a D.C.-based artist who has exhibited her work nationally and internationally for the last 18 years. Her work is part of national and international collections including the Art Museum of the Americas of the OAS, the National Museum of Women in the Arts, Andres Institute of Art, New Hampshire, Museum of New Art, Michigan, Universidad Nacional de Colombia, Bogotá, and Kronan SculpturePark, Lulea, Sweden. Her work addresses issues of social and political content. Comments on migration, war, identity, translate into video, performance, site-specific installations, and two-dimensional media in the form of photography and drawing. Carolina has received awards and scholarships throughout her career and has been recognized with fellowships and commissioned projects that have contributed to the landscape of the city. Mayorga received a BFA in Art and Textiles in Bogotá, Colombia and a MFA in sculpture from The University of Kansas.

Victoria Reis is the Co-Founder, Executive & Artistic Director of Transformer, founded in 2002 in Washington, DC. Reis began her career in contemporary visual arts at the National Association of Artists' Organizations/NAAO, developing programs and field-wide initiatives in support of artist centered and artist-run organizations and the artists they serve. Reis has launched several independent temporal arts programs in DC (Mott's Market Art and Stack It Up Productions, among others), providing vital opportunities for emerging artists to present their work, develop audiences, and establish networks for future support. Reis curated the 1999 and 2001 Options exhibition for the Washington Project for the Arts, at the time the only regional exhibition highlighting the work of emerging artists. Reis was the Director of Programs for the International Sculpture Center, organizing the 17th International Sculpture Conference in Chicago, IL, and was a curatorial consultant to the DC Commission on the Arts & Humanities' Public Art Program, building the current DC Convention Center's Art Collection as well as the Wilson Building's art collection. Reis has been a member of ArtTable since 2000, and recently became a Founding Member of Common Field (commonfield.org), a new national network of art spaces and artist-led initiatives.



Target Gallery	Torpedo Factory Art Center	
Floor Plan: 682 sq ft	Wall Space 79'	Scale 3/16"=1'0"
Note: Ceiling is 105" high.		
Floor is laminate		
Walls are drywall, homasote, and plywood		